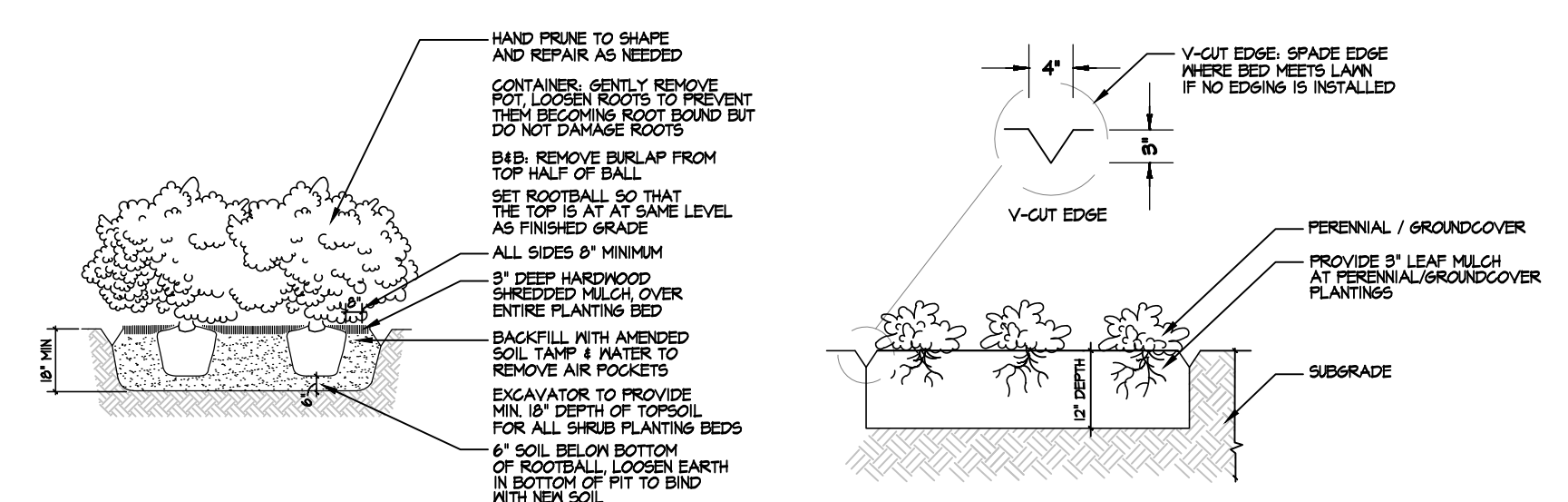
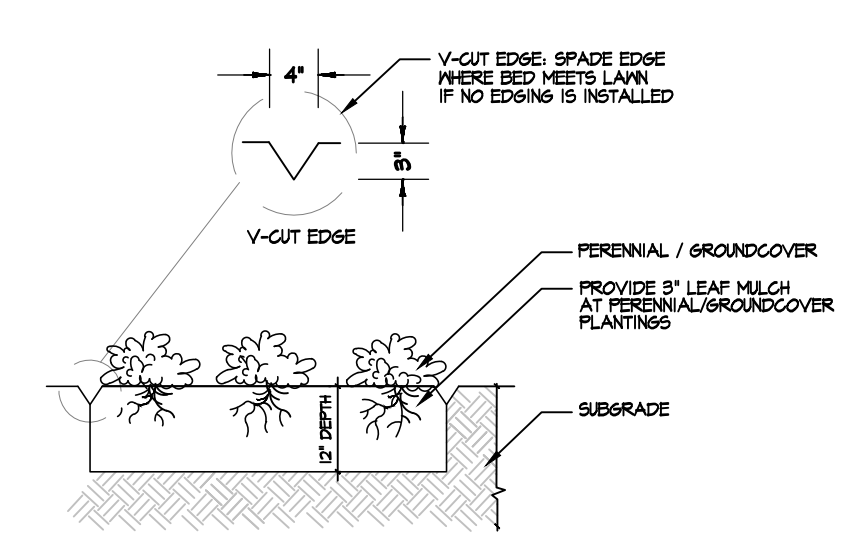


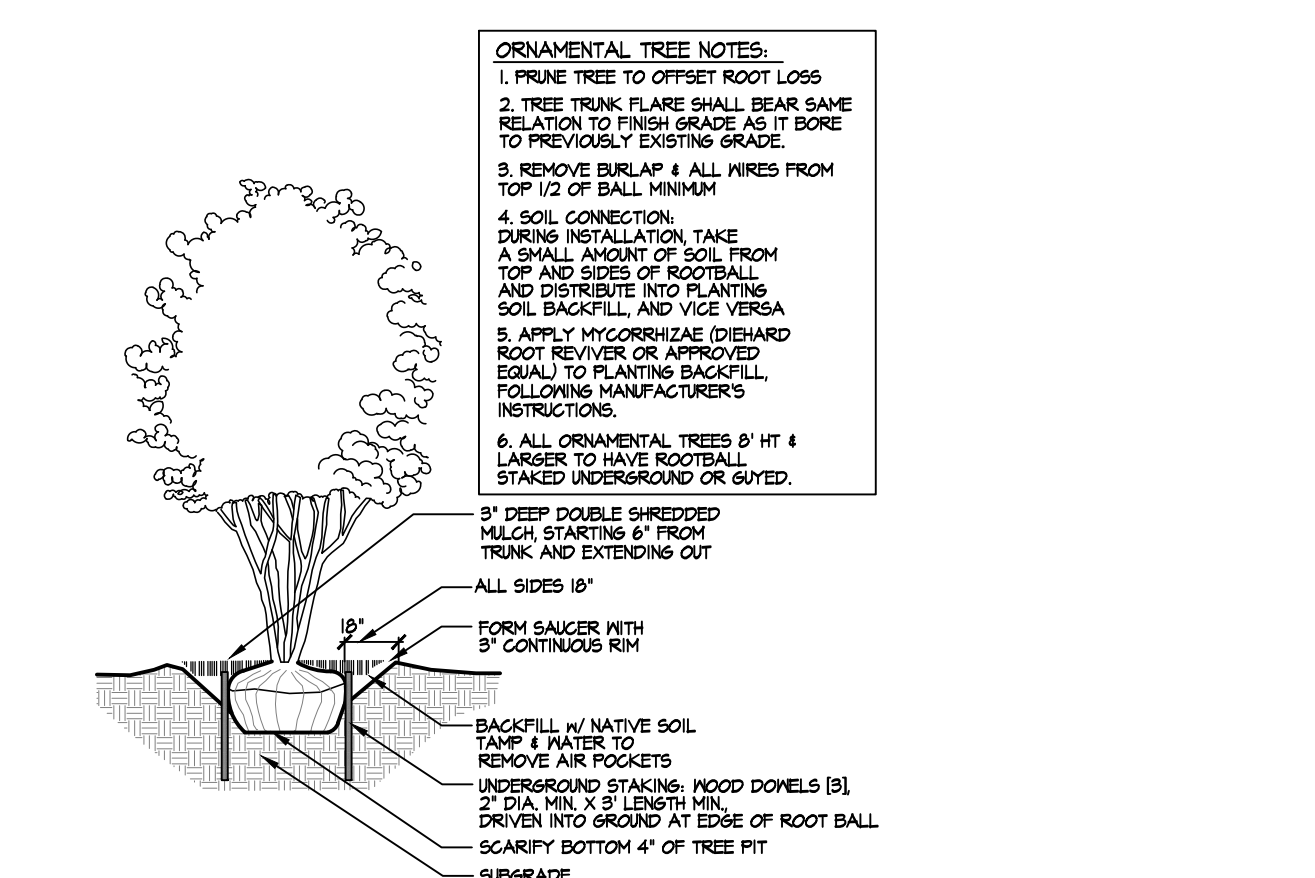
1 SHADE TREE



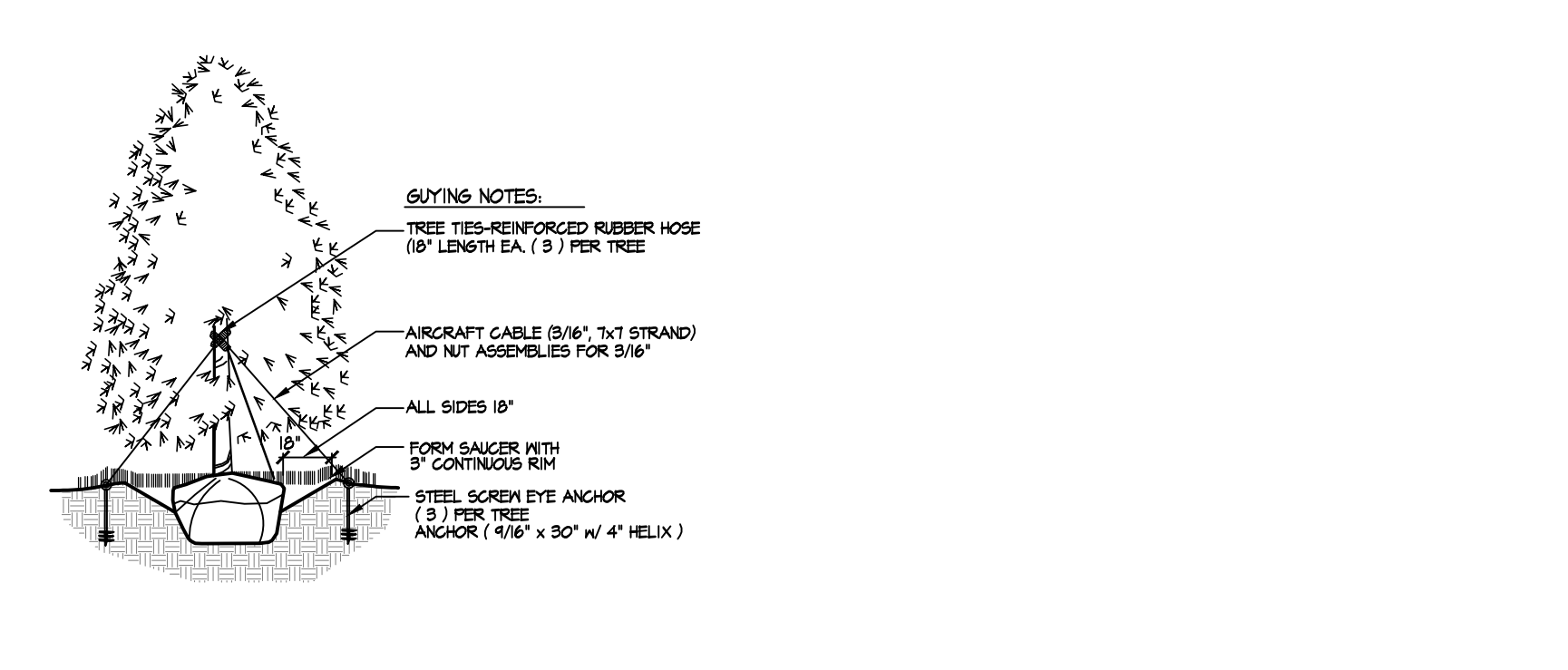
2 SHRUB PLANTING DETAIL



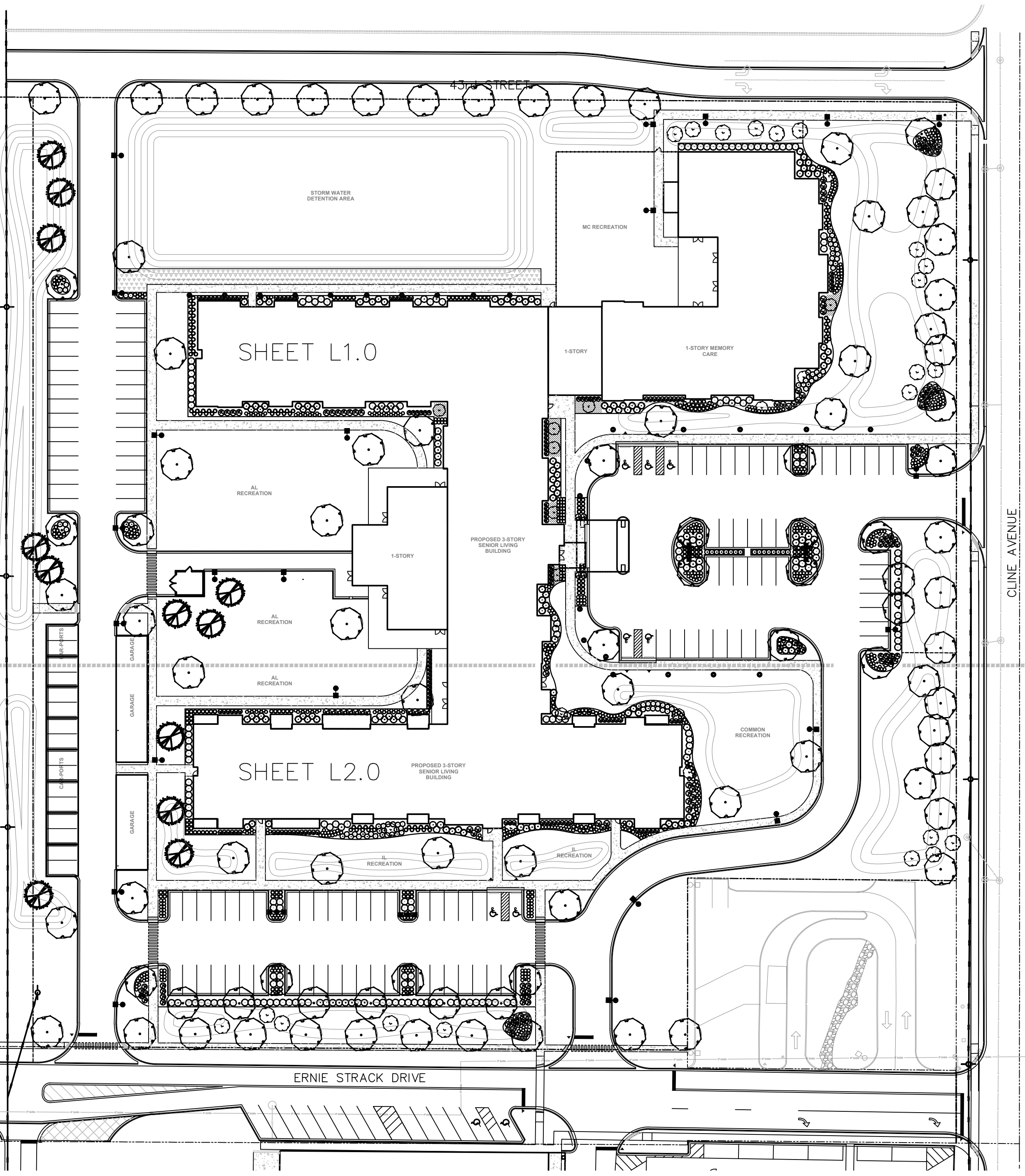
3 PERENNIAL PLANTING DETAIL



4 ORNAMENTAL TREE



6 EVERGREEN TREE



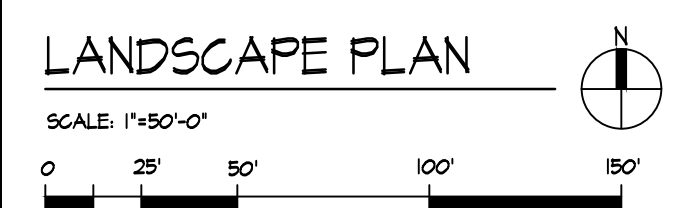
LANDSCAPE CALCULATIONS

Signs - N/A	Required	Proposed
Right-of-Way Buffering		
43rd Street (364')	6 ornamental trees 12 small shrubs	6 ornamental trees 12 small shrubs
Cline Avenue (442')	5 canopy trees 10 ornamental trees	5 canopy trees 10 ornamental trees
Ernie Strack Drive (414')	5 ornamental trees 4 small shrubs	5 ornamental trees 10 small shrubs
Parkway Trees		
43rd Street (364')	17 canopy trees	*11 canopy trees (35' o.c.)
Cline Avenue (442')	14 canopy trees	**14 canopy trees (35' o.c.)
Ernie Strack Drive (414')	12 canopy trees	**11 canopy trees (35' o.c.)
Front Yard Landscaping		
43rd Street	Meets	Proposed
Cline Avenue	Meets	Meets
Ernie Strack Drive	Meets	Meets
Side Yard Landscaping in Nonresidential Zones - N/A		
Transition Yard Planting - N/A		
Parkway Landscaping - See Parkway Trees (above)		
Principal Building Foundations		
Landscaping area	Required Minimum 5' width	Proposed Minimum 5' width
Parking Lot Landscaping		
Landscaping area (min. 7%)	Required 50% of #	Proposed 1600 sq ft (10%)
15' parking spaces	(1) tree/4 lf.	2) trees
Perimeter landscaping	(1) tree/25 lf.	64 shrubs 8 trees
Interior landscaping	(1) tree/island (10) shrubs/100 sq. ft. island	Meets Shrubs, perennials and ornamental grasses provided
Buffer Yards - N/A		
Outdoor, Storage, Loading, Utility and Trash Collection Areas		
Landscaping area	Required To be screened	Proposed Meets
Parks and Open Space - N/A		

*Utility conflicts - Parkway trees shown inside ROW line, quantities reduced
 **Utility conflicts - Parkway trees shown inside ROW line

PLANT LIST

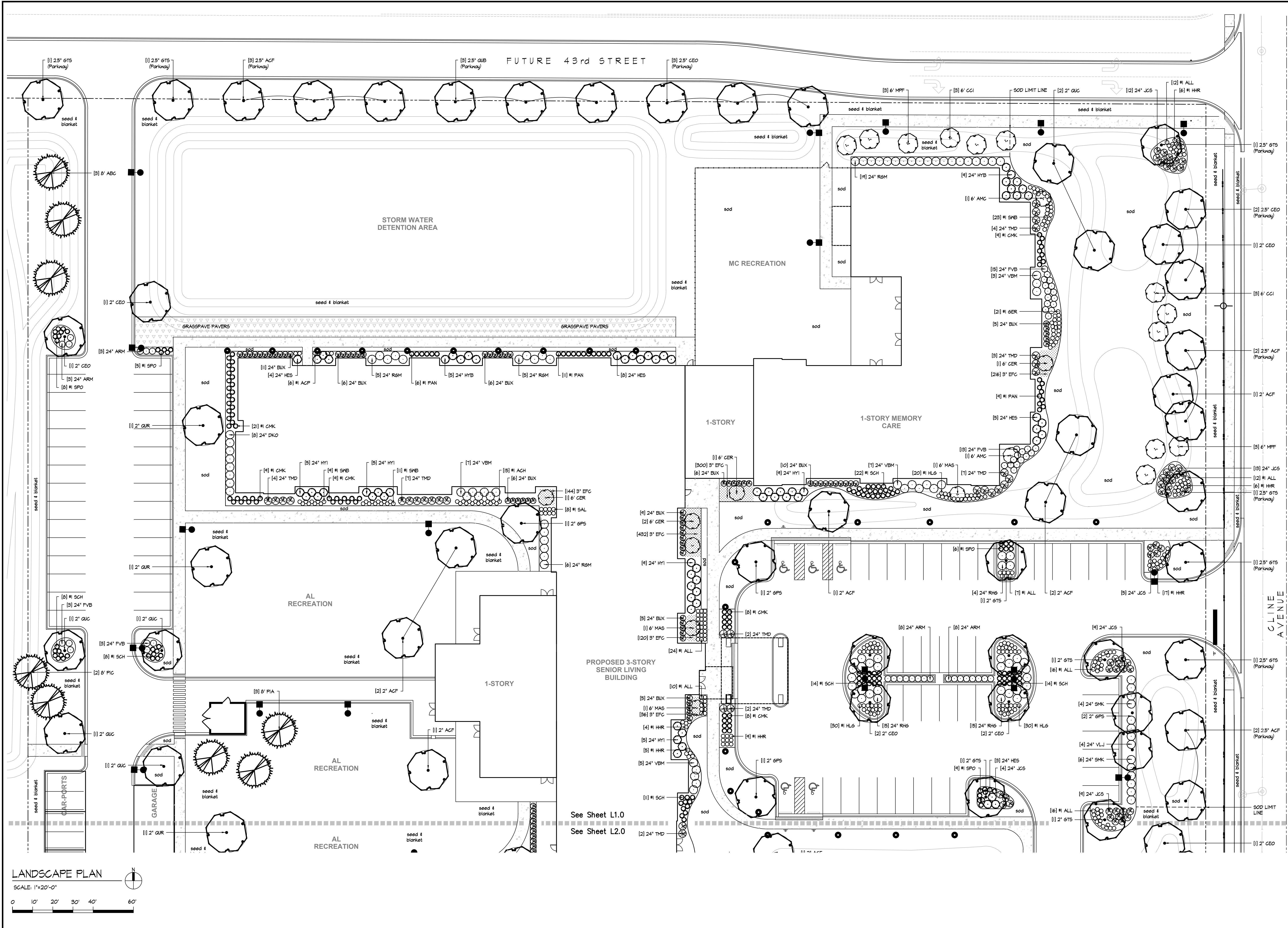
KEY QTY.	SIZE	BOTANICAL NAME	COMMON NAME	REMARKS
SHADE TREES				
ACF 11	2"	Acer x freemanii 'Autumn Blaze'	Autumn Blaze Maple	Specimen, symmetrical
ACF 10	2.5"	Acer x freemanii 'Autumn Blaze'	Autumn Blaze Maple	Specimen, symmetrical
CEO 12	2"	Celtis occidentalis	Common Hackberry	Specimen, symmetrical
CEO 6	2.5"	Celtis occidentalis	Common Hackberry	Specimen, symmetrical
SPS 6	2"	Sinkgo biloba 'Princeton Sentry'	Princeton Sentry Sinkgo	Specimen, symmetrical
GTS 7	1"	Gleditsia triacanthos var. 'harmis 'Skyline'	Skyline Thornless Honeylocust	Specimen, symmetrical
GTS 4	2.5"	Gleditsia triacanthos var. 'harmis 'Skyline'	Skyline Thornless Honeylocust	Specimen, symmetrical
EYD 4	2"	Symonias dioica 'Espresso'	Espresso Kentucky Coffeetree	Specimen, symmetrical
EYD 5	2.5"	Symonias dioica 'Espresso'	Espresso Kentucky Coffeetree	Specimen, symmetrical
QUB 7	2"	Quercus bicolor	Swamp White Oak	Specimen, symmetrical
QUB 3	2.5"	Quercus bicolor	Swamp White Oak	Specimen, symmetrical
QUC 2	2"	Quercus muhlenbergii	Chinquapin Oak	Specimen, symmetrical
QUR 3	2"	Quercus rubra	Red Oak	Specimen, symmetrical
QUR 3	2.5"	Quercus rubra	Red Oak	Specimen, symmetrical
ORNAMENTAL TREES				
ANC 4	6"	Amelanchier canadensis	Shadblow Serviceberry	Specimen, symmetrical
CCI 12	6"	Crataegus crusgalli var. 'harmis	Thornless Cockspur Hawthorn	Specimen, symmetrical
CEK 6	6"	Cercis canadensis	Eastern Redbud	Specimen, symmetrical
MAS 3	6"	Nyssa siliata	Star Magnolia	Specimen, symmetrical
MFF 4	6"	Malva 'Prairie Fire'	Prairie Fire Crabapple	Specimen, symmetrical
EVERGREEN TREES				
ABC 4	8"	Abies concolor	Concolor Fir	Specimen, symmetrical
PIA 3	8"	Picea canadensis	Norway Spruce	Specimen, symmetrical
FIG 5	8"	Picea pungens	Colorado Green Spruce	Specimen, symmetrical
SHRUBS				
KEY QTY.	SIZE	BOTANICAL NAME	COMMON NAME	REMARKS
ARK 31	24"	Aronia melanocarpa 'UCONN4165'	Low Shrub Round Chokeberry	Full branching to ground
BLX 184	24"	Buxa x microphylla 'Siencex'	Chicagoan Green Boxwood	Full branching to ground
DKO 20	24"	Dierodora '62X85544'	Kodiak Orange Diervilla	Full branching to ground
PVB 51	24"	Paraphia viridissima 'Bronzeleaf'	Bronze Dwarf Forsythia	Full branching to ground
HES 25	24"	Hydrangea macrophylla 'Ballerina'	Endless Summer Hydrangea	Full branching to ground
HYB 24	24"	Hydrangea paniculata 'Bobo'	Bobo Hydrangea	Full branching to ground
HTI 45	24"	Hydrangea arborescens 'Incrediball'	Incrediball Hydrangea	Full branching to ground
HYQ 5	24"	Hydrangea quercifolia	Oakleaf Hydrangea	Full branching to ground
JCS 82	24"	Juniperus chinensis var. 'sargentii'	Sargent Juniper	Full branching to ground
RSM 23	24"	Ribes alpinum 'Green Mound'	Green Mound Alpine Currant	Full branching to ground
RHS 75	24"	Rhus aromatica 'Sro-Lov'	Gro-Lov Fragrant Sumac	Full branching to ground
SHK 10	24"	Syringa patula 'Miss Kim'	Miss Kim Lilac	Full branching to ground
SYB 30	24"	Syringa Bloomerang 'SMB1BT'	Dark Purple Blooming Lilac	Full branching to ground
TMD 56	24"	Taxus x media 'Densiformis'	Dense Yew	Full branching to ground
VEB 34	24"	Viburnum dentatum 'Christm'	Blue Muffin Arrowwood Viburnum	Full branching to ground
LL 24	24"	Viburnum dentatum 'KLM Seventeen'	Little Joe Arrowwood Viburnum	Full branching to ground
PERENNIALS, ORNAMENTAL GRASSES AND GROUNDCOVERS				
KEY QTY.	SIZE	BOTANICAL NAME	COMMON NAME	REMARKS
ACH 32	#	Achillea 'Moonshine'	Moonshine Yarrow	Container
ACP 14	#	Astilbe chinensis 'Pumila'	Pumila Astilbe	Container
ALL 140	#	Allium Summer Beauty'	Summer Beauty Allium	Container
CMK 10	#	Calamagrostis acutiflora 'Karl Foerster'	Feather Reed grass	Container
EFC 1248	#	Elymus forstenii var. 'coloratus'	Purpleleaf Wintercreeper	Pots
HR 25	#	Hemerocallis 'Happy Returns'	Happy Returns Daylily	Container
HR 132	#	Hemerocallis 'Little Grappette'	Little Grappette Daylily	Container
HLS 102	#	Hemium virgatum 'Heavy Metal'	Heavy Metal Switch grass	Container
SAL 23	#	Salvia x superba 'Blue Hill'	Blue Hill Salvia	Container
SCH 80	#	Schizachyrium scoparium	Little Bluestem	Container
SPO 86	#	Sporobolus heterolepis	Prairie Dropseed	Container
SMB 56	#	Symphoricaricum 'Wood's Blue'	Wood's Blue Aster	Container



REVISIONS	No.	Description	Date
	1	Review Comments	09-19-19
	2	Site Plan Revisions	03-17-20
	3	Site Plan Revisions	05-29-20
	4	Light Pole Locations	05-12-20
	5	Per Final Detailed Plans	09-16-20

Design by: KWS
 Drawn by: KWS
 Checked by: KWS
 Start date: 08.28.2019
 Project no.

LANDSCAPE PLAN



LANDSCAPE PLAN
 SCALE: 1"=20'-0"
 0 10' 20' 30' 40' 60'

CLIENT NAME:
 Craig R. Knoche & Associates
 24 N. Bennett Street
 Geneva, Illinois

LANDSCAPE ARCHITECTURE
pamelaself
 202 South Cook Street Ste #212-214
 Barrington, Illinois 60010
 847.436.4822
 www.pamelaself.com

LICENSE # 157.000683
 STAMP:

ARCHITECT:
 CIVIL ENGINEER:
 GENERAL CONTRACTOR:

SENIOR LIVING DEVELOPMENT
 NWC Cline Avenue and Ernie Strack Drive
 Highland, Indiana

REVISIONS	No.	Description	Date
	1	Review Comments	09.19.19
	2	Site Plan Revisions	03.17.20
	3	Site Plan Revisions	05.29.20
	4	Light Pole Locations	05.12.20
	5	Per Final Detailed Plans	09.16.20

Design by: KWS
 Checked by:
 Start date: 08.28.2019
 Project no.

LANDSCAPE PLAN

L1.0

