



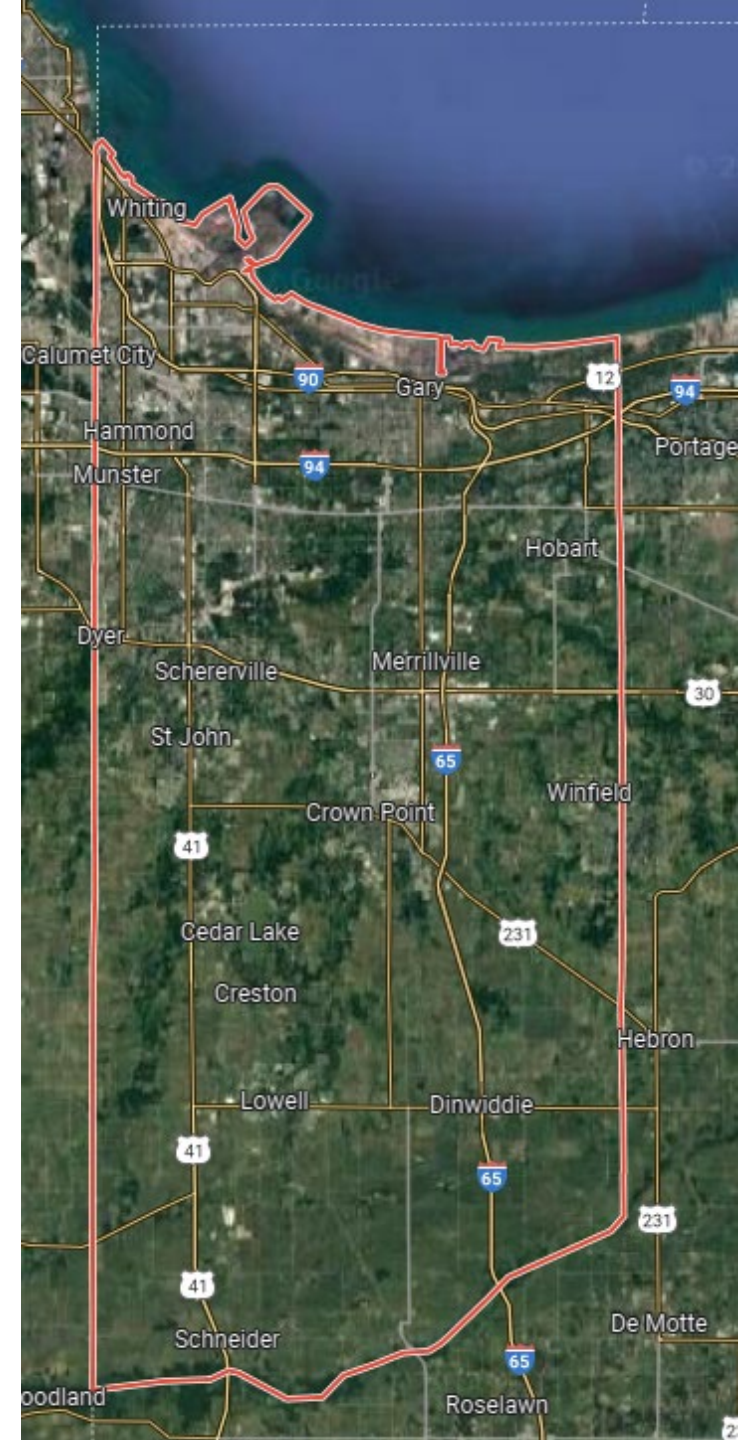
*NORTHWEST INDIANA TREE PLANTING
CONSORTIUM
Expanding and Stewarding Regional Forest Canopy*

IN BRIEF: WHAT WE ARE DOING

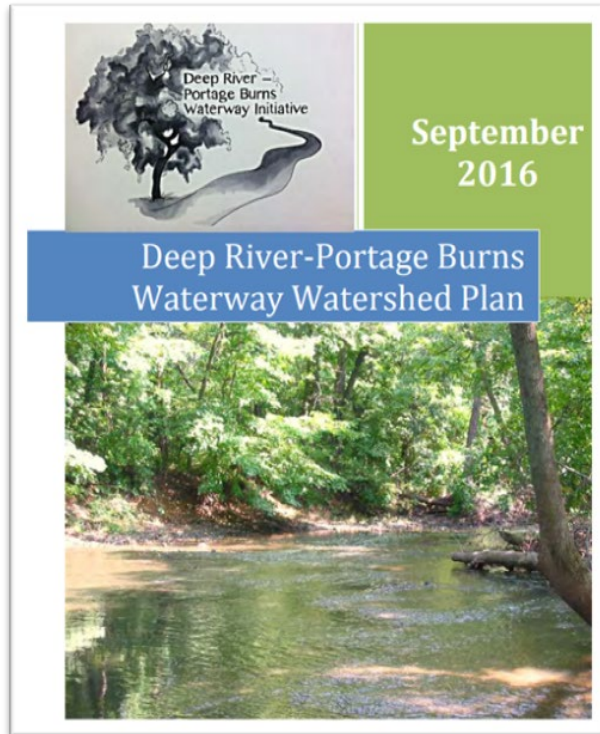
- Delta Institute is working with municipal, business, and community partners in **Lake County, Indiana** to expand regional forest canopy acreage.
- Delta will organize a regional **Tree Planting Consortium (TPC)** to increase planting and forestry management capacity in Lake County.
- The TPC creates a **multi-community approach** to canopy mapping, planting, stewardship and maintenance planning, and capacity building in accordance with the communities needs with for example trainings, toolkits, demonstrations sites or any others relevant tools.
- The TPC is designed to **expand and leverage a strong public-private-nonprofit-community partnership** to achieve communities, state and regional planning goals.

WHY LAKE COUNTY, INDIANA?

- Restoration of the urban canopy is a top priority in Northwest Indiana, where **7.7% of total forest area was lost** between 2000 and 2016.
- The tree canopy and habitat loss is happening most rapidly in EJ-designated communities that are already dealing with flooding, water quality, and heat island issues.



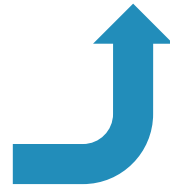
HOW THE TPC ALIGNS WITH LOCAL, REGIONAL, AND STATE PLANS



Conserve, manage and protect existing forests, with increased emphasis on oak regeneration.

Restore forests, especially in riparian areas.

Significantly increase Indiana's forest canopy by developing community assistance programs and tools.



Increase tree canopy density by:

- Planting 1000 native trees annually;
- Hosting forestry workshops;
- Marketing urban forestry to municipalities.



THE BASICS

- Funder: USFS Landscape Scale Restoration
3-year grant - \$333,344 (Federal Funding)
- Partners, so far



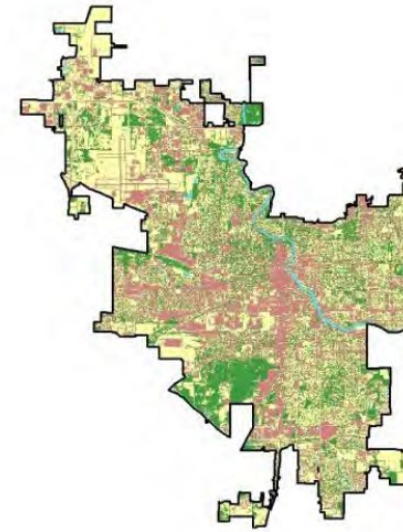
WHY JOIN THE TREE PLANTING CONSORTIUM?

- **Maximize your canopy restoration & stormwater management**
 - Expand equity & climate resilience
 - Improve soil, water, air and habitat quality
 - Better resilience to climate change
- **Promote community education & capacity building**
 - Tree planting site demonstration
 - In-person trainings: planting, restoration & maintenance, tool use
 - BMP toolkit and webinar for continued tree planting care



WHY JOIN THE TREE PLANTING CONSORTIUM?

- Streamline data analysis & sharing towards your tree planting goals!
 - Updated your Tree Canopy Survey
 - Prioritized Planting & Stewardship Plan
 - Access to the Tree Canopy Keeper & Healthy Cities Healthy Trees platforms
- Tree Procurement Assistance
 - Leverage group-buying rates & secure agreements w/ high-quality nurseries
- Leverage Technical Resources and Expertise



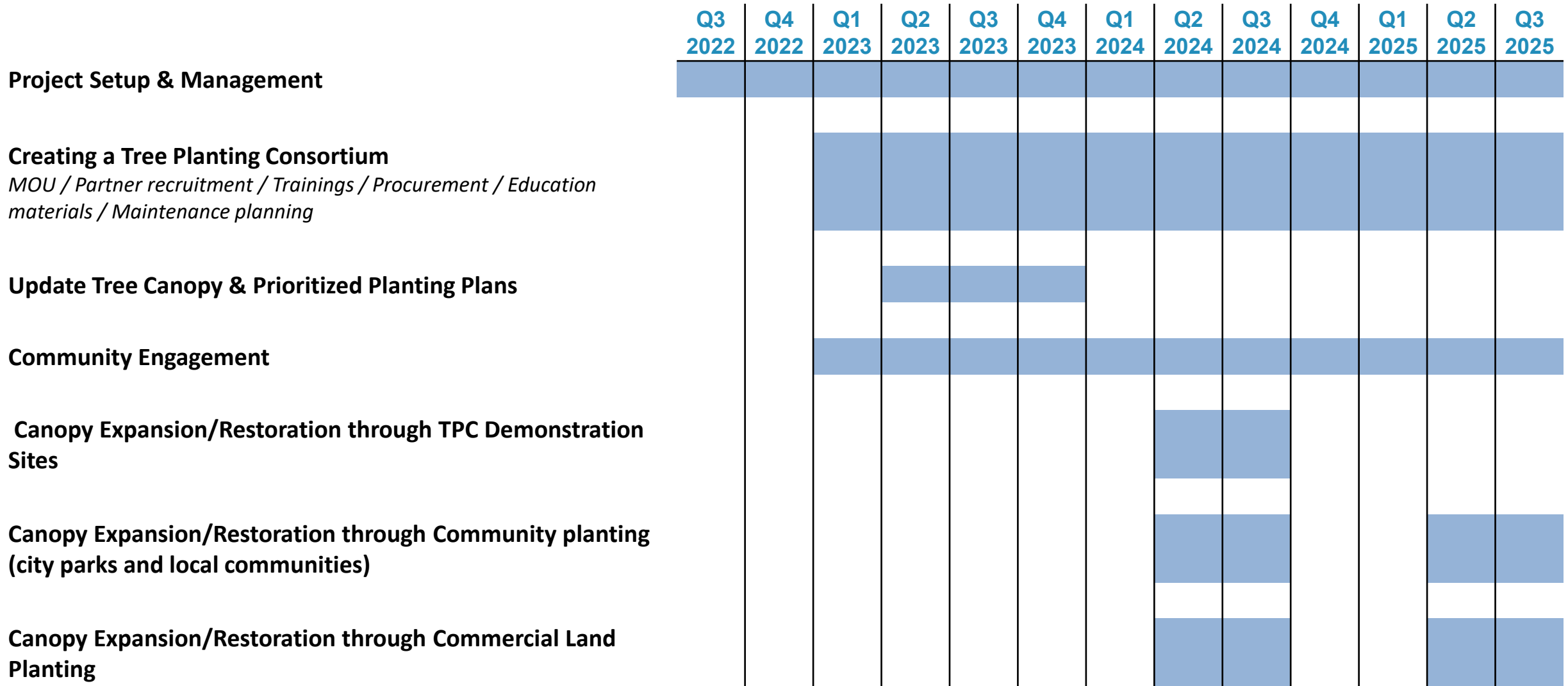
South Bend



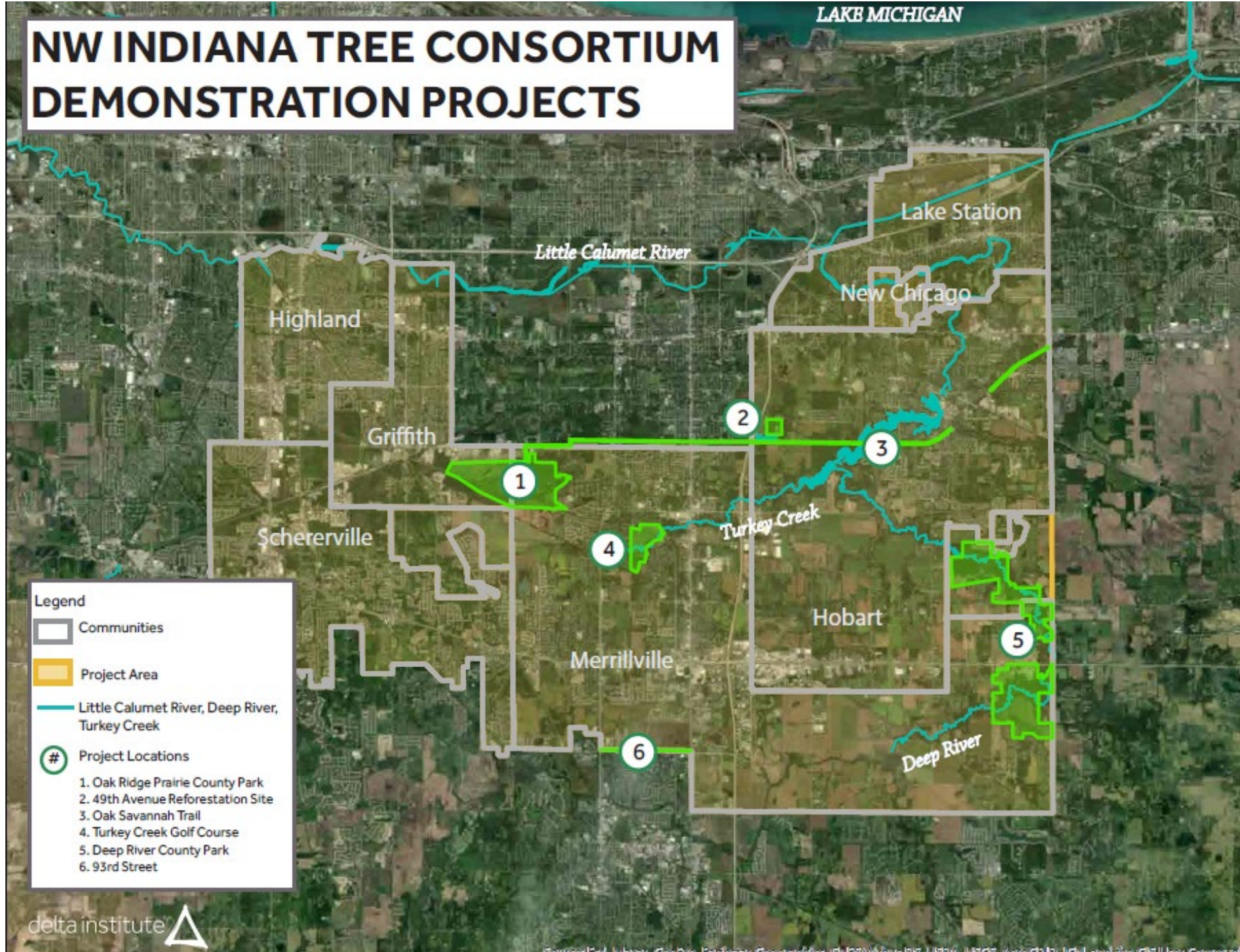


Questions and Discussion

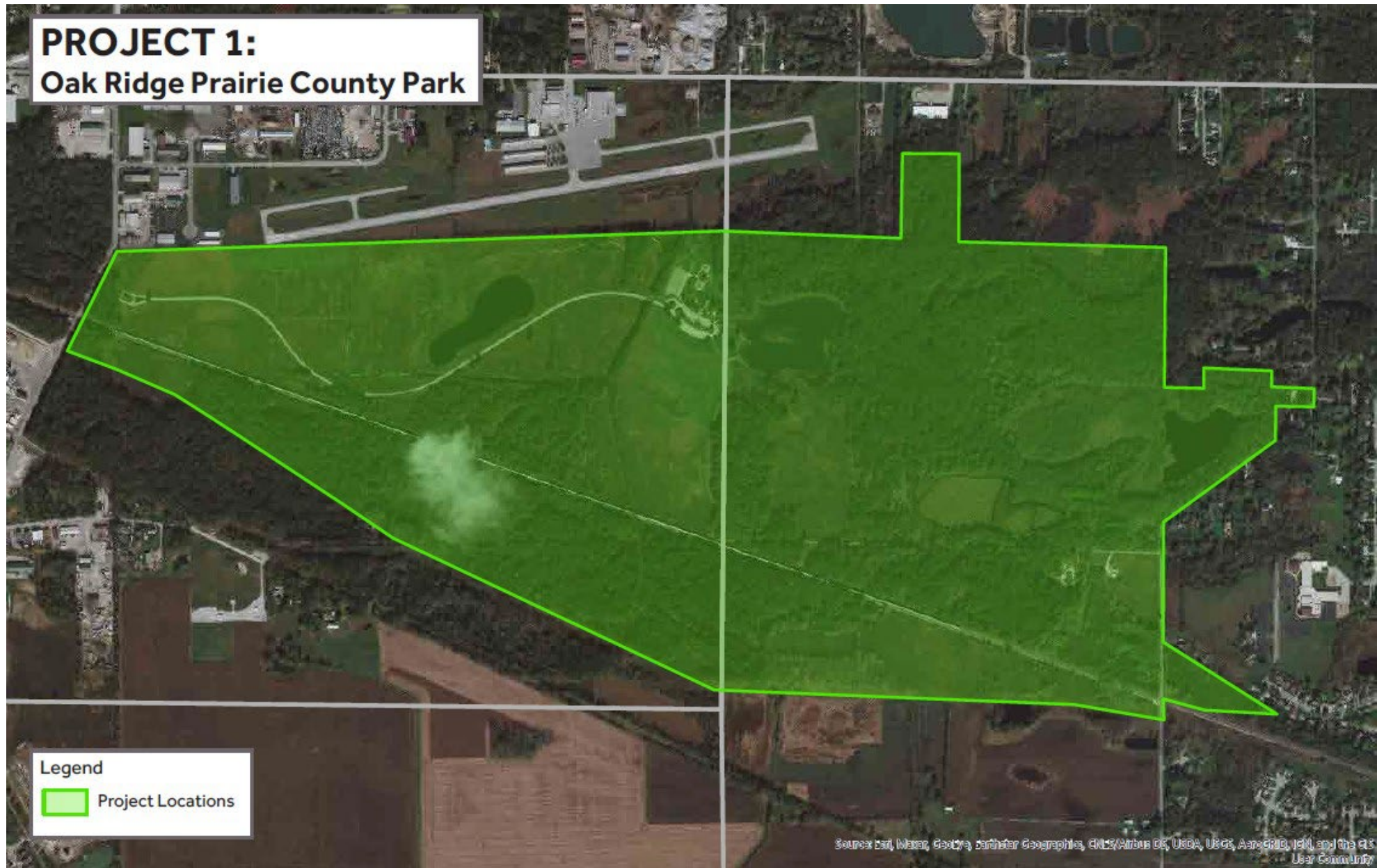
PROJECT TIMELINE



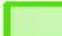
NW INDIANA TREE CONSORTIUM DEMONSTRATION PROJECTS



PROJECT 1: Oak Ridge Prairie County Park



Legend

 Project Locations

Sources: Esri, Maxar, GeoEye, Earthstar Geographics, CNES/Airbus DS, USDA, USGS, AeroGRID, IGN, and the GIS User Community

**PROJECT 2:
49th Avenue Reforestation Site**

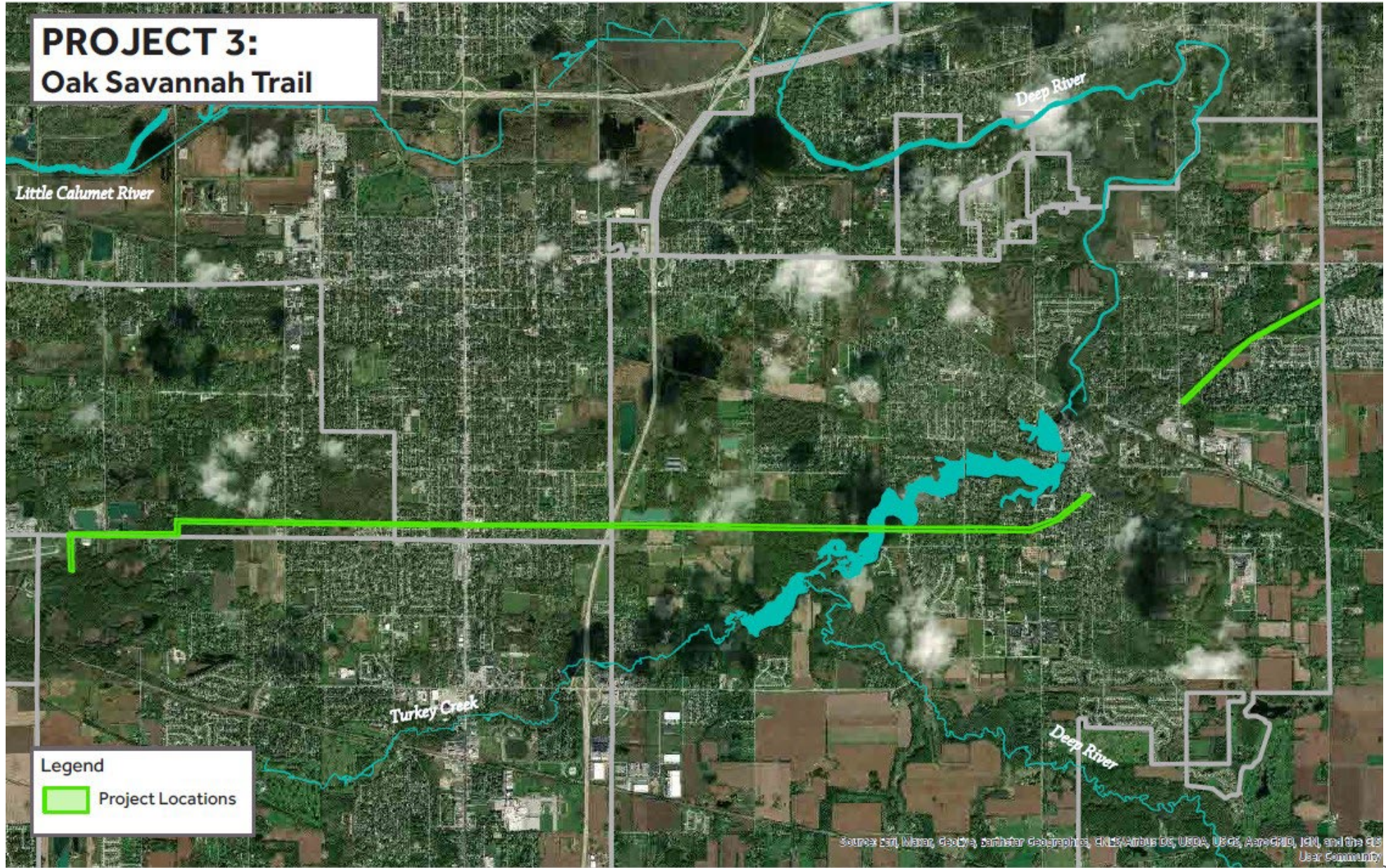


Legend

 Project Locations

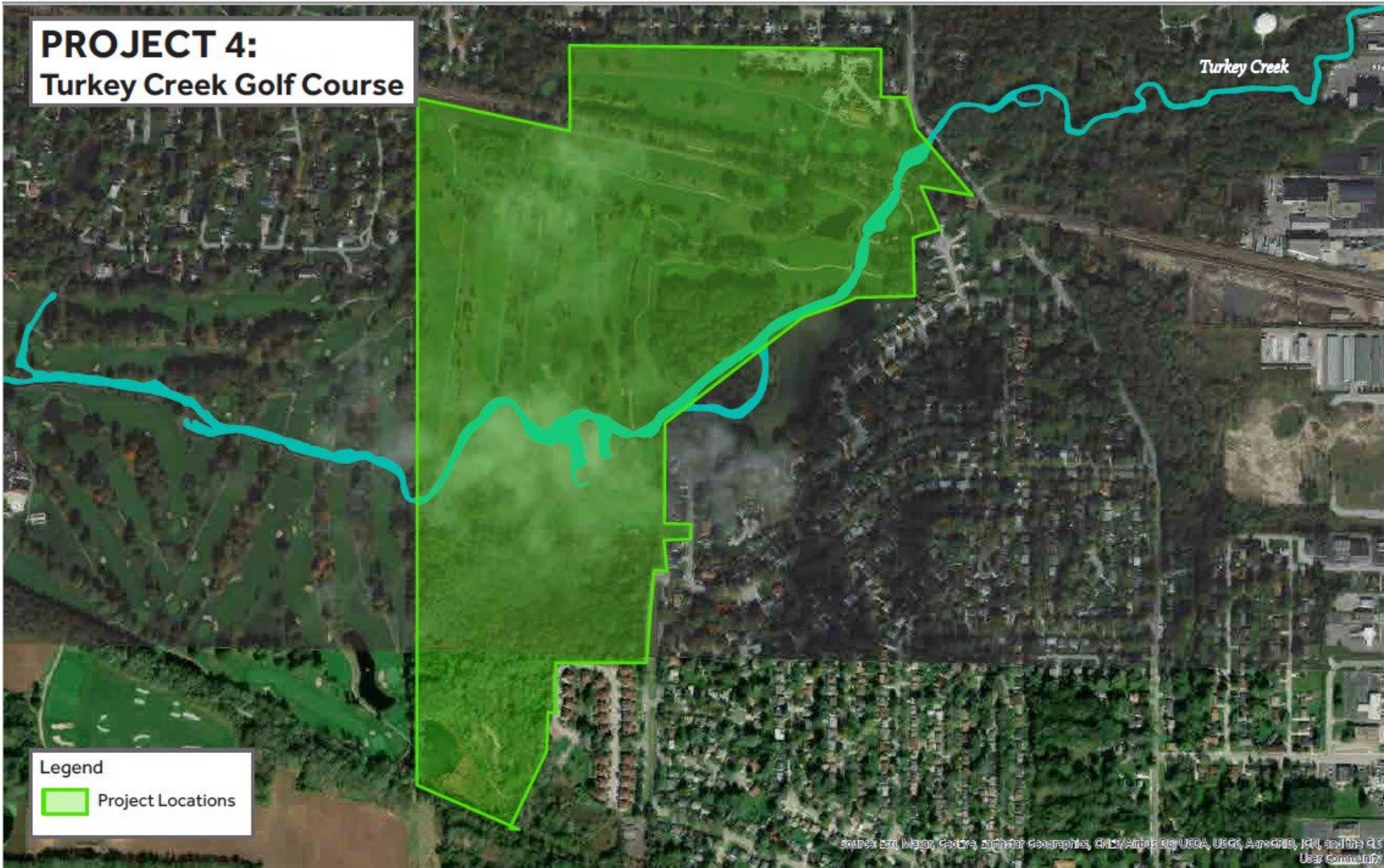
Source: Esri, Maxar, GeoEye, Earthstar Geographics, CNES/Airbus DS, USDA, USGS, AeroGRID, IGN, and the GIS User Community

PROJECT 3: Oak Savannah Trail



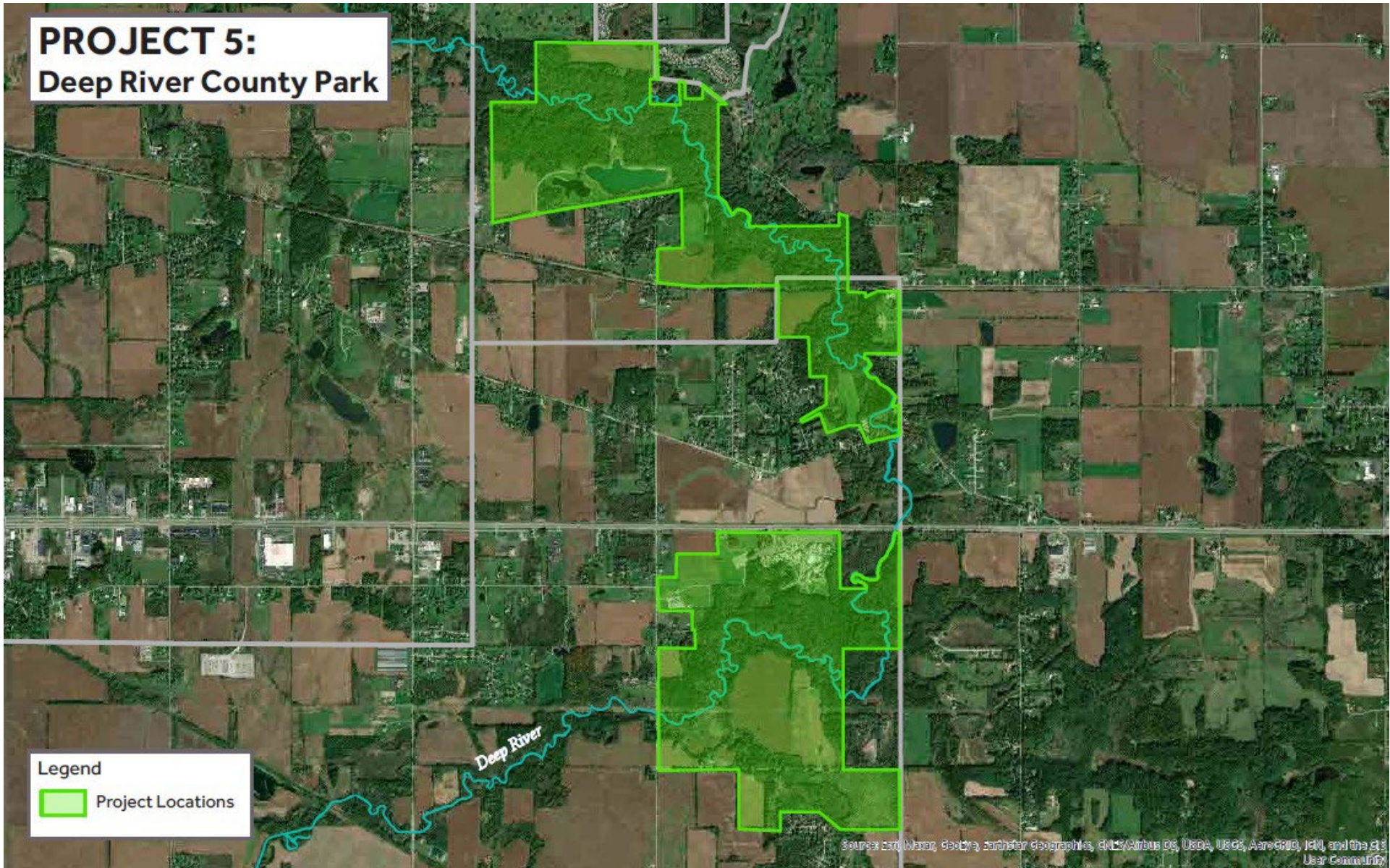
Source: Esri, Mapbox, GeoEye, AeroGRID, IGN, and the GIS User Community

PROJECT 4: Turkey Creek Golf Course



Sources: Esri, Maxar, GeoEye, DigitalGlobe, CNES/Airbus DS, USDA, USGS, AeroGRID, IGN, and the GIS User Community

PROJECT 5: Deep River County Park



PROJECT 6: 93rd Street





Questions and Discussion

OUR QUESTIONS FOR YOU

- What tree planting plans does your community have over the next couple of years?
- What barriers are you experiencing towards planting trees?
- What would you like to see this consortium potentially provide?
- Are there any private landowners that might be interested in joining our efforts?





Thank You